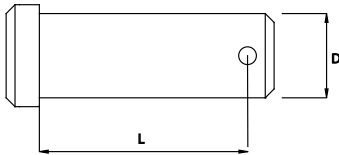




CLEVIS PIN

Polished Stainless Steel - AISI 316

Pins and G-rings are spare parts for the WDS program.

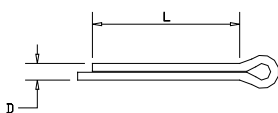


ART. NO.	D	L	KG/100	PACK
061304	4.0	13	0.2	BULK
060805	5.0	8	0,2	BULK
061605	5.0	15	0.3	BULK
061806	6.0	17	0.9	BULK
061663	6.4	16	0.9	BULK
061908	8.0	18	1.0	BULK
062008	8.0	21	1.1	BULK
062395	9.5	23	1.5	BULK
061910	10,0	19	1,7	BULK
062611	11.0	26	2.4	BULK
062812	12.0	28	3.0	BULK
063012	12.0	30	3.5	BULK
063412	12.0	34	4.0	BULK
063214	14.0	32	5.3	BULK
063714	14.0	37	5.5	BULK
063416	16.0	34	6.5	BULK
064016	16.0	40	7.7	BULK
064419	19.0	44	13.0	BULK
064919	19.0	49	14.0	BULK
064622	22.0	46	16.3	BULK
065522	22.0	55	19.0	BULK
065822	22.0	58	20.0	BULK
065525	25.4	55	25.0	BULK
066325	25.4	63	28.0	BULK
067328	28.0	73	40.0	BULK
068332	32.0	83	60.0	BULK
068835	35.0	88.5	76.0	BULK



SPLIT PINS

Stainless Steel - AISI 316

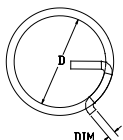


ART. NO.	DIM	L	KG/100	PACK
070609	1.5	10.0	0.01	100
0706101	2.0	12.0	0.03	100
070610	2.0	15.0	0.03	100
070611	2.0	25.0	0.05	100
0706121	2.5	16.0	0.06	100
070612	2.5	25.0	0.10	100
0706131	3.2	20.0	0.14	50
070613	3.0	25.0	0.15	50
070614	3.0	32.0	0.20	50
0706151	4.0	32.0	0.35	BULK
070617	5.0	40.0	0.75	BULK
070618	6.3	50.0	1.30	BULK

BLUE WAVE STANDARDS

Thread Split hole

Size	Ø
-	-
1/4"	2.2
1/4"	2.2
1/4"	2.2
5/16" + 3/8"	2.8
5/16" + 3/8"	2.8
7/16" + 1/2"	3.5
7/16" + 1/2"	3.5
7/16" + 1/2"	3.5
5/8" + 3/4"	4.5
7/8" + 1"	5.5
-	-



G-RING

Stainless Steel - AISI 316

ART.NO.	DIM.	D	KG/100	PACK
070601	1,00	11,0	0,015	100
070602	1,25	15,0	0,075	100
070603	1,50	19,0	0,100	100
070604	2,00	23,0	0,230	100