

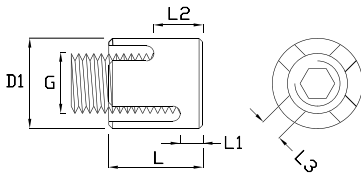
## NET CLIPS

Stainless Steel - AISI 316

ART.NO	WIRE	G	D1	L	L1	L2	L3	KG/100
A600003C	3	M10	17	19	5	8	3,2	2,4
A600004C	4	M12	20	21	5	8	4,2	3,6
A600005C	5	M12	20	23	5	10	5,2	3,6
A600006C	6	M12	20	25	5	10	6,2	5,8
A600008C	8	M16	26	32	8	15	8,3	7,7

For Through - going thread please order

ART. NO.	WIRE	G	D1	L	L1	L2	L3	KG/100
A610003C	3	M10	17	19	5	8	3,2	2,4
A610004C	4	M12	20	21	5	8	4,2	3,6
A610005C	5	M12	20	23	5	10	5,2	3,6
A610006C	6	M12	20	25	5	10	6,2	5,6
A610008C	8	M16	26	32	8	15	8,3	7,7

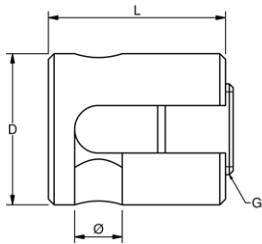


Net Clips are used where crossed wires need connection e.g. for wire nets. They are supplied in two versions - one with through-going thread, and one without.

## FLEXIBLE NET CLIP

Stainless Steel - AISI 316

ART.NO.	G	Ø	D	L	ROTATION	KG/100
A602403	M12	3	20	17,5	0-90 Dg.	31
A602404	M12	4	20	19,5	0-90 Dg.	32
A602405	M12	5	20	21,5	0-90 Dg.	32
A602406	M12	6	20	23,5	0-90 Dg.	34

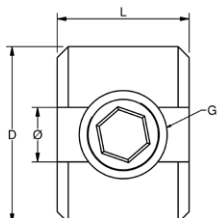


## STOPPER

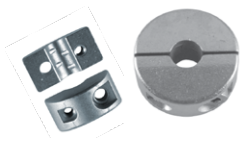
Stainless Steel - AISI 316

ART. NO.	WIRE	G	L	D	KG/100
A660003	3-4	M8	12	15	13
A660005	5-6	M10	15	20	30

NOTE: for use on 7x19 and 7x7 wire only



Stoppers are used on both horizontal and vertical wires.

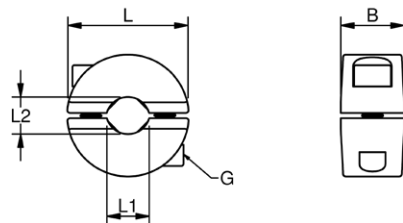


Stoppers are used on both horizontal and vertical wires. They come in two parts for easy installation; have small teeth inside and thus a better grip when load is applied.

## STOPPER

Stainless Steel - **AISI 316** - Inside jaws for better grip

ART. NO.	WIRE	G	B	L	L1	L2	SLIP LOAD	KG/100
A650003	3	M3	10	15	3	2,5	100kg	1,4
A650004	4	M3	10	15	4	3,0	100kg	1,4
A650005	5	M4	10	20	5	4,0	100kg	2,1
A650006	6	M3	10	20	6	5,0	100kg	2,1
A650008	8	M4	12	23	8	7,0	150kg	2,6

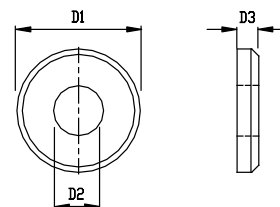


The final touch to a installation may be given by use of a cover disk. The WDS cover disk is "heavy" machined and has a raised edge .

## COVER DISK

Stainless Steel - **AISI 316**

ART. NO.	D1	D2	D3	KG/100
A500003	15	5,5	3,0	0,35
A500004	20	6,5	4,0	0,85
A500006	25	8,5	4,0	1,30

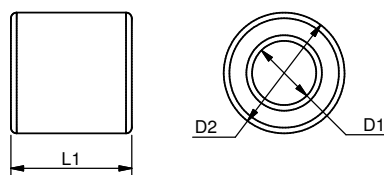


These wire stops have to be pulled on the wire before end-fittings are swaged. Afterwards the stoppers can be swaged/pressed in the right position on the wire.

## WIRESTOP

Stainless Steel - **AISI 316**

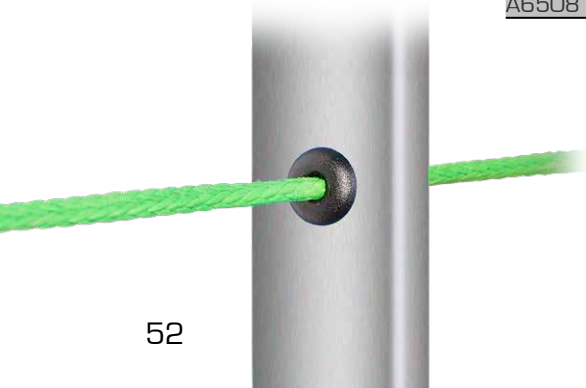
ART. NO.	WIRE	D1	D2	L1	KG/100	PACK
TAL9004	4 mm - 5/32"	4,4	7,5	8	0,2	20
TAL9005	5 mm	5,3	9	10	0,3	20
TAL9006	6 mm - 1/4"	6,5	12,6	12	0,9	20
TAL9008	8 mm - 5/16"	8,5	16	16	1,8	20



## BALLUSTRADE WIRE RELIEF

Nylon

ART. NO.	D1	D2	D3	L1	KG/100	PACK
A6504	4,2	13,0	9,2	11,2	0,1	100
A6506	6,4	14,0	10,2	13,1	0,12	100
A6508	8,4	15,6	12,8	13,1	0,14	100



Black split bushing for push or glue in.

