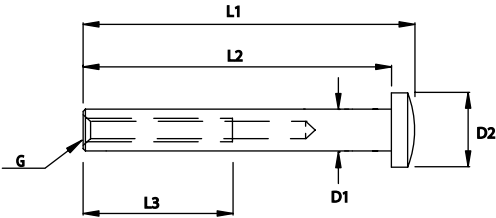


## INSIDE THREAD DOMEHEAD

Stainless Steel - AISI 316

ART. NO.	G	D1	D2	L1	L2	L3	B.L./KG	KG/100
A170503	M5	7,13	10,0	43	40	25	800	0,5
A170604	M6	8,00	11,5	49	45	30	1300	0,7
A170806	M8	11,00	14,0	60	55	35	2350	1,0

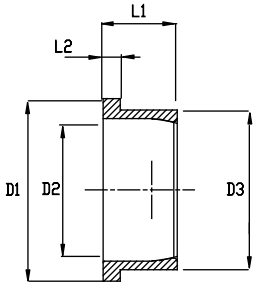


The inside thread dome head is , when combined with a threaded terminal, an ideal end/adjustment fitting for balustrades with through going holes. For 4 mm wire it can also be combined with a ball for dome head terminal, for diagonal or angle tensioning! The Dome head features an Allen key hole and minimum overall dimensions.

## SLEEVE FOR WDS BALL

Stainless Steel - AISI 316

ART. NO.	WIRE DIM.	D1	D2	D3	L1	L2	B.L./KG	KG/100
A292008	3,0 + 4,0 + 5,0	27	20	23	10	2	400	1,05
A292510	6	32	25	28	13	3	600	1,80

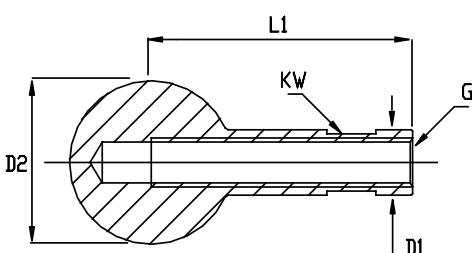


The ball sleeve is easily mounted on a balustrade. It has an inside radius covering most of the Blue Wave balls in the WDS program.

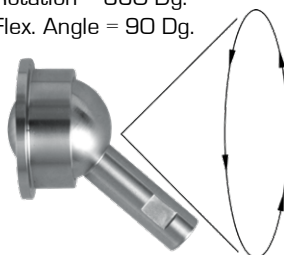
## FLEXIBLE ANGLE HINGE

Stainless Steel - AISI 316

ART. NO.	WIRE	G	D1	D2	L1	KW	B.L./KG	KG/100
A232005	3	M5	8	20	32	7	800	3,7
A232006	4,0 + 5,0	M6	8	20	32	7	1300	3,4
A232508	6	M8	11	25	36	10	2350	6,8



Rotation = 360 Dg.  
Flex. Angle = 90 Dg.



The flexible angle hinge offers an elegant and 100% correct angle to all diagonal tensioned wires from 3 - 6 mm. To adjustment there is a right handed thread inside the shaft.