

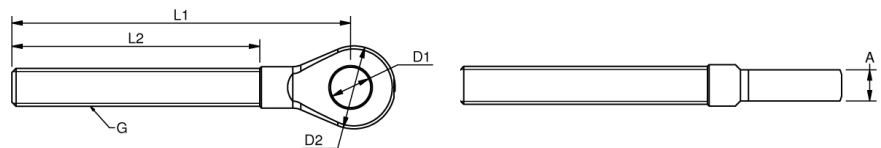


THREAD EYES

Polished Stainless Steel - AISI 316

Thread eyes are for use in rigging screws, inside thread parts or other similar terminations. Available with left handed and right handed threads - also UNF sizes on request.

NO. RIGHT	NO. LEFT	G	A	D1	D2	L1	L2	B.L./KG	KG/100	PACK
021905	031905	M5	3	5,5	12	63	41	800	0,9	25,0
021906	031906	M6	4	6,5	14	65	47	1200	1,5	25,0
021908	031908	M8	5	8,5	17	78	57	2200	3,1	25,0
021910	031910	M10	6	10,5	22	90	63	3500	5,1	25,0
021912	031912	M12	8	13,0	25	110	80	5100	10,1	10,0
021914	031914	M14	9	13,0	28	124	90	6800	14,1	10,0
021916	031916	M16	10	14,5	31	133	100	9400	20,4	10,0
021920	031920	M20	15	19,5	40	164	120	14700	40,6	5,0
021922X	031922X	M22	18	23,0	46	196	140	15200	69,0	BULK
021924X	031924X	M24	20	26,0	53	230	170	17700	105,0	BULK
021927X	031927X	M27	25	28,5	65	247	180	23000	153,0	BULK
021930X	031930X	M30	30	33,0	70	274	200	28000	204,0	BULK
021936X	031936X	M36	30	36,0	80	295	220	41000	296,0	BULK

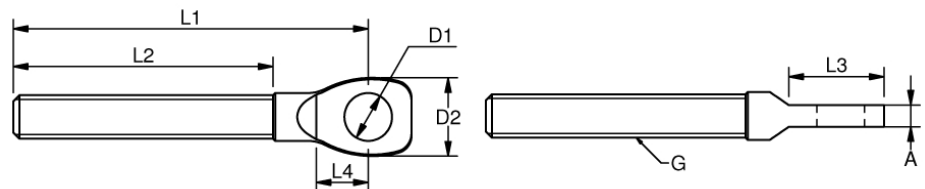


THREAD EYES - SMALL

Stainless Steel - AISI 316

Small thread eyes for use with the small rigging screws body, inside thread parts or other terminations.

NO. RIGHT	NO. LEFT	G	A	D1	D2	L1	L2	L3	L4	B.L./KG	KG/100
A440505	A450505	M5	2,5	5,3	9	41	30	11	6,0	400	0,6
A440506	A450506	M6	3,8	5,3	11	48	35	13	7,0	800	1,2
A440606	A450606	M6	3,8	6,3	11	48	35	13	7,0	800	1,2
A440608	A450608	M8	4,5	6,3	15	57	40	16	8,5	1300	2,2



THREAD EYE

Stainless Steel - AISI 316

Small thread eyes for use with the small rigging screws body, inside thread parts or other terminations.

NO. RIGHT	G	A	D1	D2	L1	L2	B.L./KG	KG/100
02190898	M8	9,0	8	18	30	21	2200	1,9

